
Netherlands Plant Protection Service

Ministry of Agriculture, Nature and Food Quality
P.O.Box 9102
6700 HC Wageningen
The Netherlands



agriculture, nature
and food quality

PEST REPORT

Tuta absoluta Povolny (*Gelechiidae*) – tomato leaf miner - in tomato fruit greenhouse in The Netherlands

Introduction

This report is a follow-up to a report issued in February 2009, concerning the first finding of this pest in the Netherlands.

This follow-up report concerns the first official findings of *Tuta absoluta* in the Netherlands at a greenhouse production facility for tomato fruits. At the beginning of May 2009, limited damage to a few fruits and leaves caused by larvae of the pest has been observed at one company producing tomato fruits. The origin of the outbreak is linked to an adjacent tomato packaging and sorting facility which is part of the same company and specialised in packaging vine tomatoes *inter alia* originating from Spain. In February 2009 the first finding of adults of the pest were recorded at the packaging and sorting facility of this same company (see EPPO reporting service).

At the same production company multiple adults have been captured in pheromone traps (38 adults). At one other production company adults have been captured in pheromone traps (11 adults). These findings are the result of a nation wide pheromone trap survey at 80 tomato fruit producing facilities and all packaging stations.

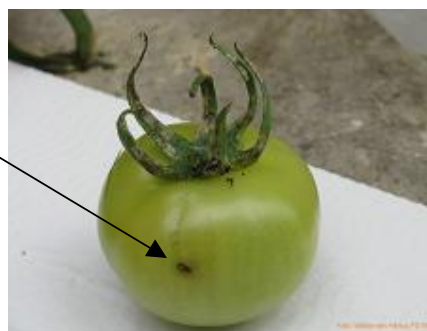
T. absoluta is not listed as a harmful organism in the EU directive 2000/29/EC). *T. absoluta* is listed on the EPPO A1 list . A pest risk analysis will be completed by the end of June 2009.

Pest status in the Netherlands: Transient, actionable, under surveillance. Isolated population not expected to establish. Appropriate phytosanitary measures, including surveillance are being applied.

Impact

Visual damage on some fruits and some leaves, caused by larval feeding, has been observed. Damaged fruits are not suitable for marketing.

Figures: Damage to leaves and fruit in the crop caused by larvae of *Tuta absoluta*.



Damage caused by
Lyriomyza sp.

DATE: May 2009

Surveillance

Since the last pest report of February 2009, surveillance at production and packaging stations has been carried out. Continuous and multiple (several hundreds) adult findings have been recorded in pheromone traps at packaging stations. Surveillance using pheromone traps is ongoing at 80 production companies and packaging stations.

Origin of the finding

The origin of the finding is most likely a consignment of tomatoes that has been transported into the packaging location in The Netherlands from the infested area in Spain. The production facility in Spain is located in Almeria, close to Murcia.

Inspection and detection methods

The specimen were detected in a deltatype trap with pheromone lures of *T. absoluta*, on the 20th of May, 2009.

Phytosanitary risks

See pest report of February 2009.

Phytosanitary measures

Specific actions have been initiated at the production facility for ensuring eradication. There are no greenhouses in the direct vicinity of this production facility. Measures will be taken to further monitor the occurrence of *T. absoluta* at other production facilities, especially focussing on facilities that produce tomatoes and pack tomatoes from other (Spanish) growers. Furthermore, growers and trade will be informed about the outbreak and about the possible risk of *T. absoluta* for tomato production.

Reference:

NPPO of the Netherlands